

A Fresh Look at Rotary Technology

At one time the best way to make a "Seed Pellet" was to use the tried and true method in the "Coating Pan". This method required a great deal of labor and operator skill. Through enhancements with automation and coating materials one skilled coater can double or even triple his/her productivity and provide a superior pellet with less inconsistencies in pill size.

Ask us about our many other accessories for Pelleting.



BraceWorks Automation and Electric

BraceWorks Automation and Electric
3103-49 Ave
Lloydminster, SK S9V1C7
Canada

Phone: 306-825-9772
Fax: 306-825-2667

Email: tbrace@braceworkselectric.com

SEDPPELL

RP-30-DB Seed Pelleting Machine

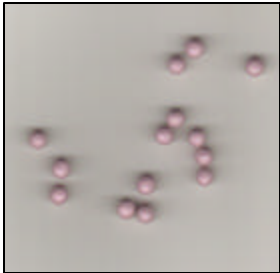


Innovative Pelleting
Technology

**BraceWorks Automation and
Electric**

Tel: 306-825-9772

What Sets Us Apart



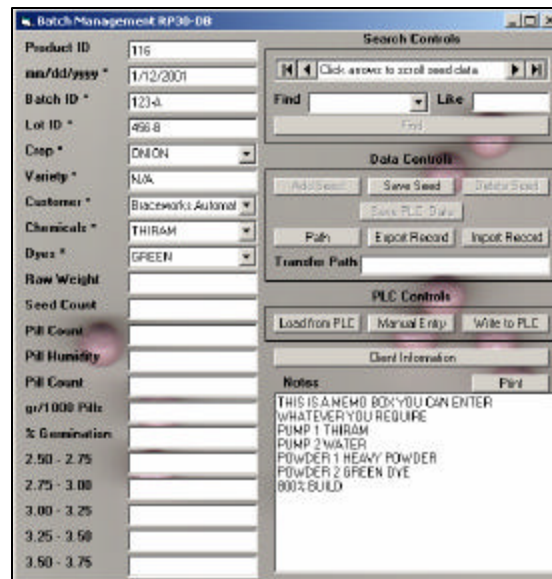
There are many features that make the RP-30-DB superior to all other machines on the market. While making pellets it is critical to apply

your powders and liquids accurately and evenly. For this reason we have precise digitally controlled Powder Feeders and Peristaltic Pumps. The Atomizer is mounted on a "periscoping" assembly which allows the operator to raise and lower the atomizing disc with the same precise control that we have on all other features of the Pelletizer.

So what do these specialized controls mean to you? Most of us are aware of the Rotary's ability to quickly and efficiently apply a filmcoat but now with the powder and flexible easy to use controls you can make pellets more accurately, efficiently, faster, and with more repeatability in size than ever before. Other companies make similar claims that their equipment can make pellets. Our equipment is designed specifically with pelleting in mind. That is why we not only have the software to work with our equipment but also we have maintainable wear components that can be replaced inexpensively.

Batch Management Software

Once you have developed your "coats" in the RP-30-DB they are saved into the database. All your skill and technique is saved for use at a later time. This database is called "Batch Management" the entire coating process can be viewed and edited on the serving personal computer. To develop new recipes the operator simply has to record his actions when he/she manually creates the batch. This recorded process is stored in the PLC which can be loaded back into the database. This single database can operate up to 25 similar machines on a network. Recipes can be emailed to other branches using the same equipment. The number of recipes that can be stored is virtually unlimited.



Accessories:

Powder Feeders



Peristaltic Pumps



Lab Coaters



Scales for weighing batch seed, and dosing polymer or powder into batch process



BraceWorks Automation and Electric
3103-49 Ave
Lloydminster, SK S9V1C7
Canada

Phone: 306-825-9772
Fax: 306-825-2667
Email: tbrace@braceworkselectric.com